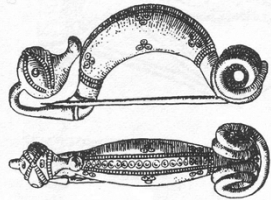


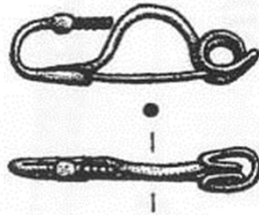
Frühlatènezeit (Lt A-B)



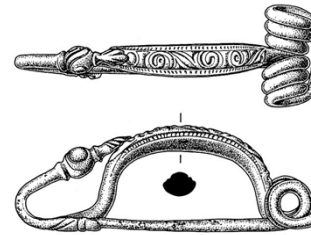
1. Maskenfibel



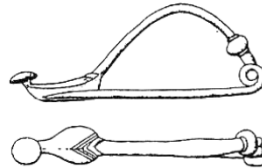
2. Vogelkopffibel



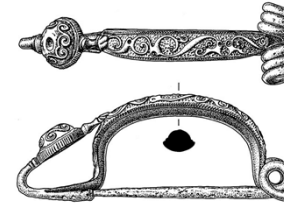
3. Fibel vom Typ Marzabotto (Frühlatène-Schema)



4. Fibel vom Typ Dux



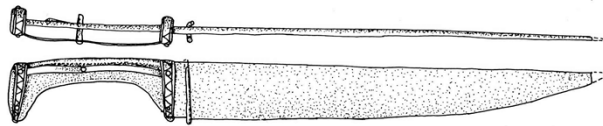
5. Fibel vom Typ Certosa



6. Fibel vom Typ Münsingen



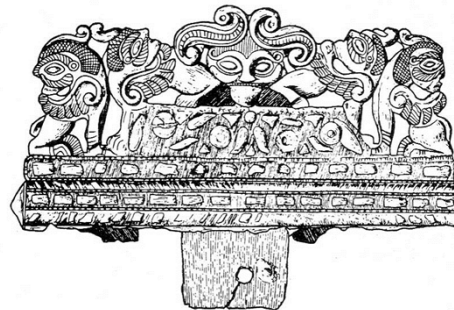
7. Linsenflasche



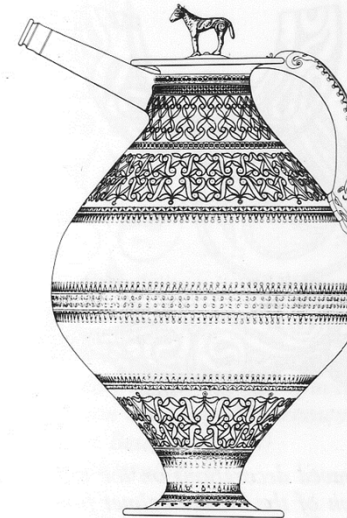
8. Haumesser



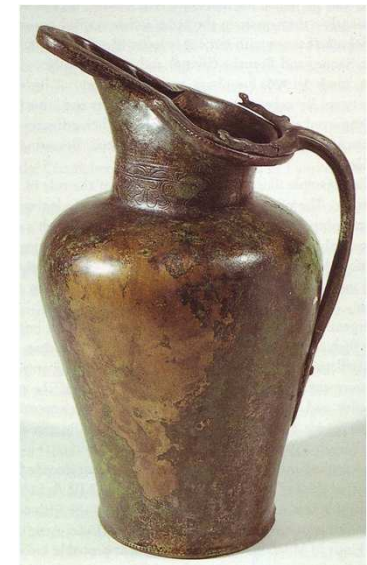
9. Durchbrochen gearbeiteter Gürtelhaken (antithetische Tiere)



10. Gürtelhaken, Kunst des „frühen Stils“

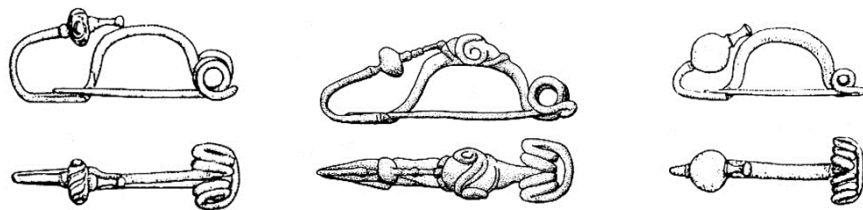


11. Röhrenkanne



12. Schnabelkanne (Import aus Etrurien)

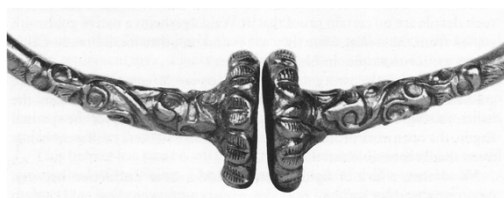
Frühlatènezeit (Lt A-B)



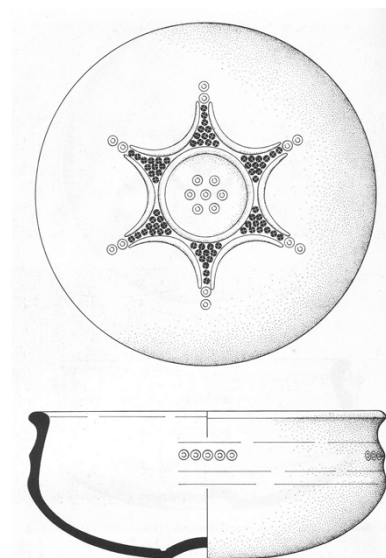
1. Fibeln der Stufe Lt B2, z.T. mit plastischer Verzierung



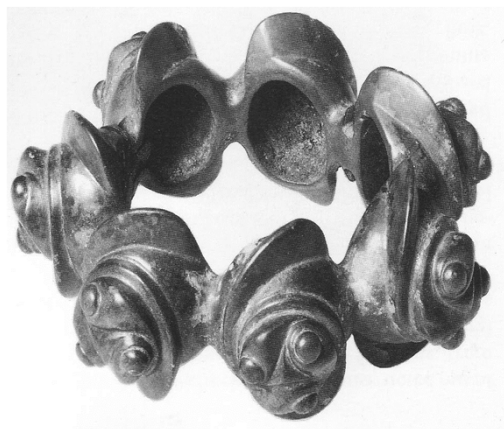
2. Scheibenhalsring



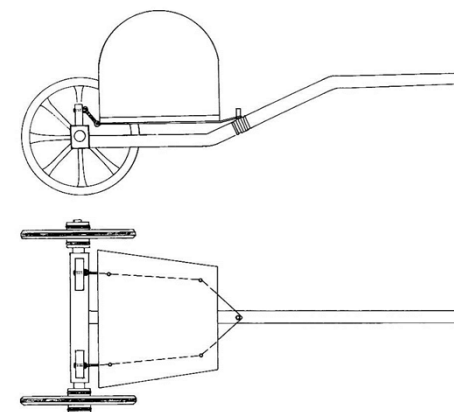
3. Halsring mit Stempelenden
(Verzierung im Waldalgesheim-Stil)



5. Stempelverzierte Keramik
(Braubacher Schale)

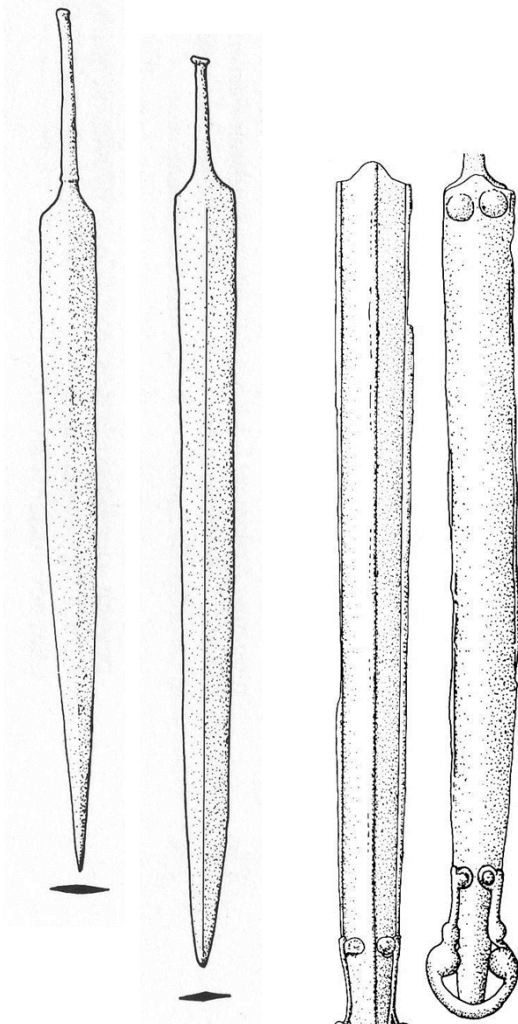


4. Hohlbuckelring (Verzierung
im „Plastischen Stil“)



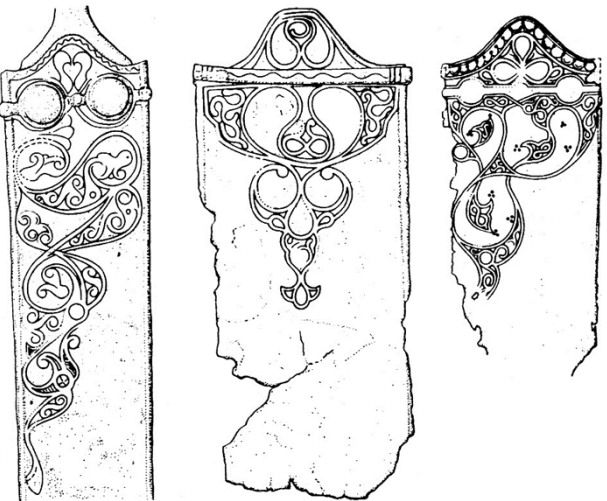
6. Zweirädriger Wagen

Frühlatènezeit (Lt A-B)

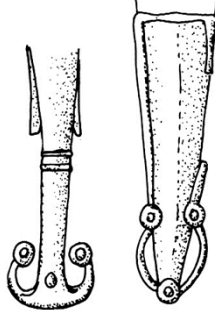


1. Schwerter, Lt A (l) und Lt B (r)

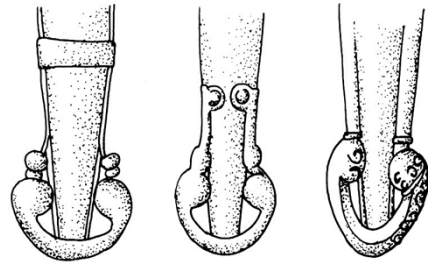
2. Schwertscheiden, Lt B



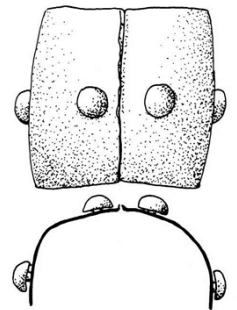
3. Verzierte Schwertscheiden, Lt B2-C1 (sog. „Ungarischer Schwertstil“)



4. Ortbänder (Lt A)



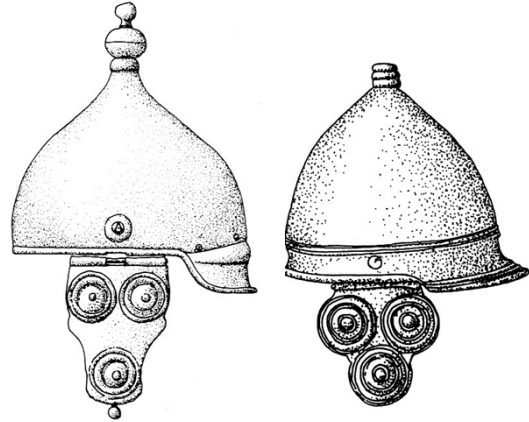
5. Ortbänder (Lt B)



6. Zweiteiliger Schildbuckel (Lt B2)



7. Helm vom Typ Berru

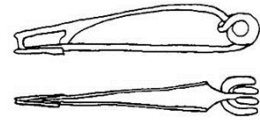
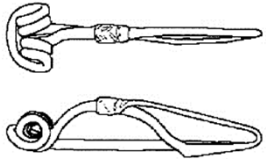


8. Helme (Lt B-C1)

Mittel- und Spätlatènezeit (Lt C-D)

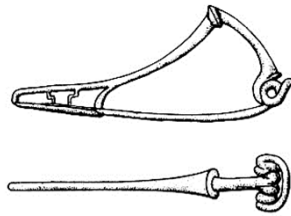
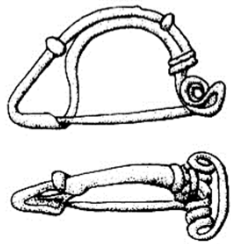


1. Ringperle (Glas) 2. Glasarmring



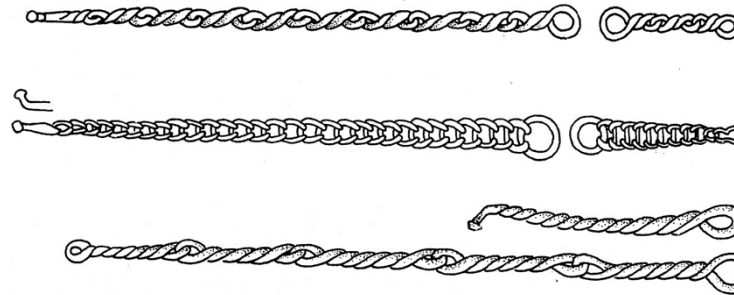
3. Fibel, Mittellatèneschema

4. Fibel vom Typ Nauheim, Spätlatèneschema

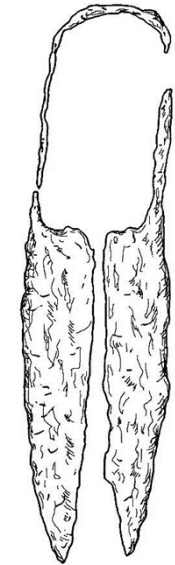


5. Beltz Variante J

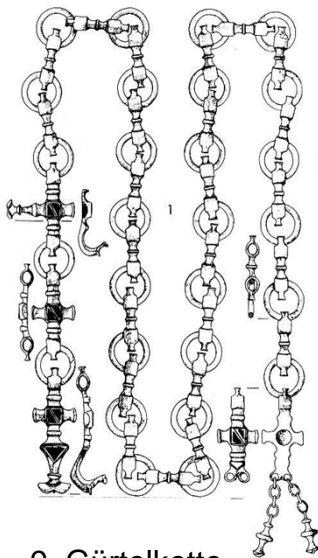
6. Geknickte Fibel



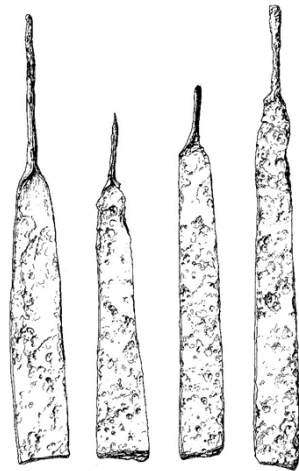
7. Schwertketten (Lt B2-C)



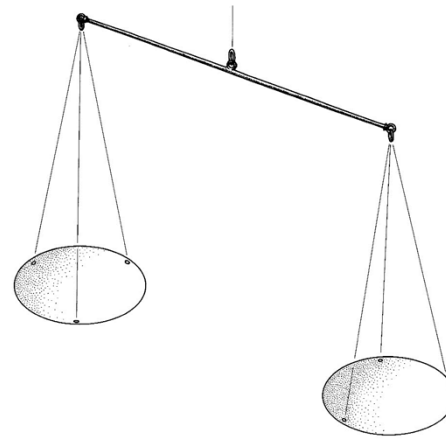
8. Schere (Eisen)



9. Gürtelkette



10. Schwertförmige Eisenbarren

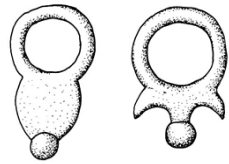


11. Feinwaage
(Waagebalken, Waagschalen)

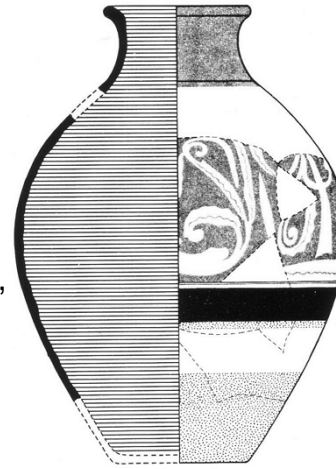


12. Goldstater der Boier

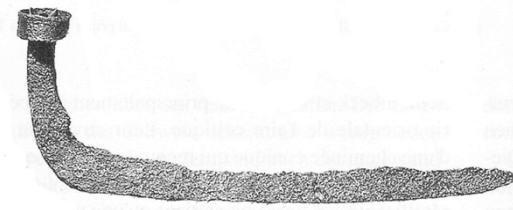
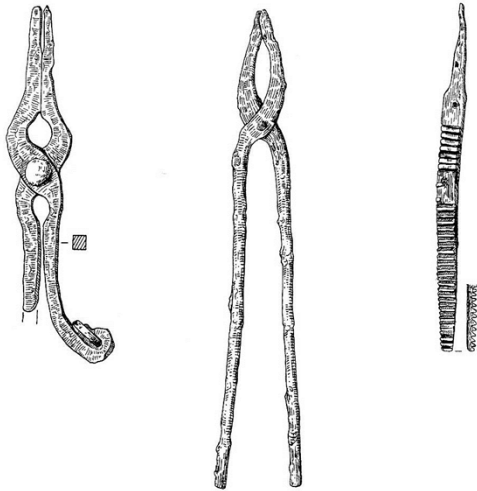
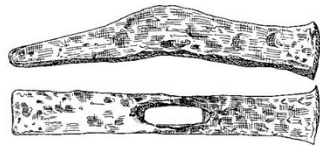
Mittel- und Spätlatènezeit (Lt C-D)



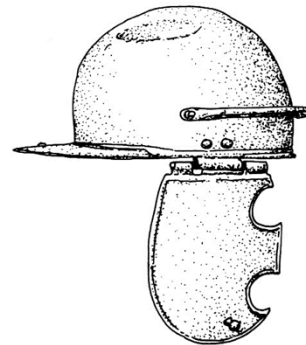
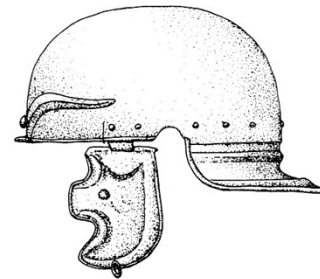
1. Gürtelhaken Lt C (links),
und Lt D (rechts)



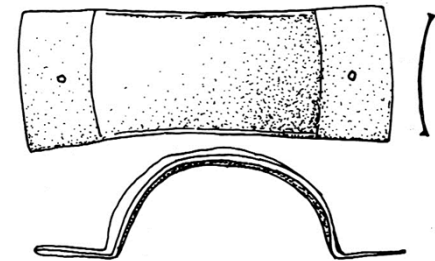
2. Bemalte Keramik



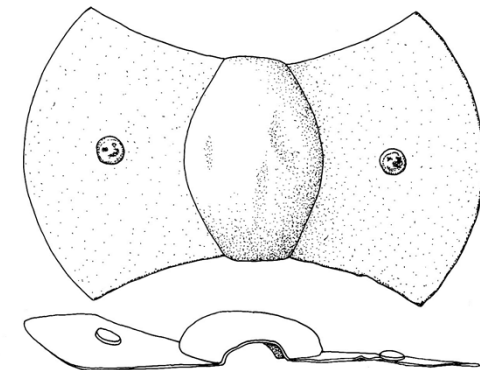
3. Eiserne Werkzeuge



4. Helme (Lt C2; D)

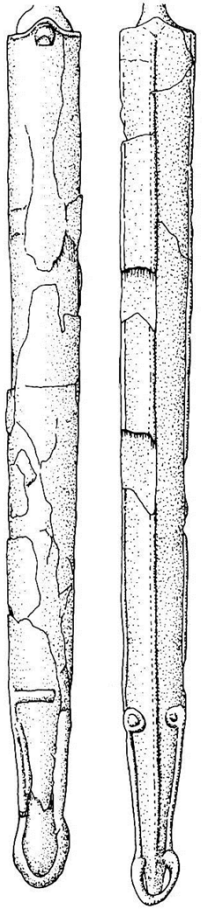


5. Bandförmiger Schildbuckel

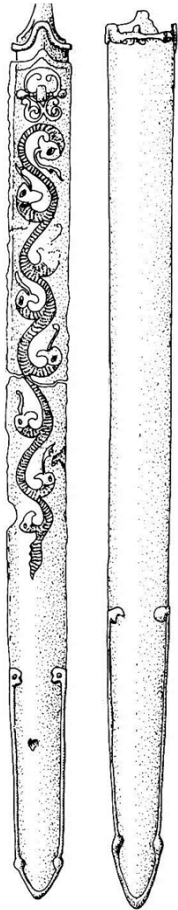


6. Schildbuckel

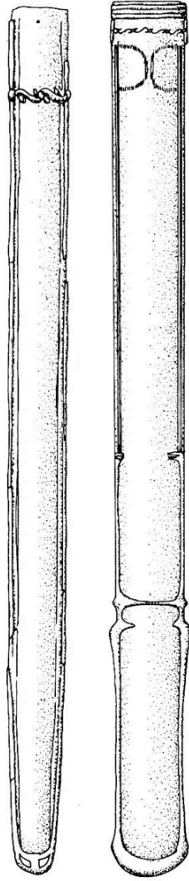
Mittel- und Spätlatènezeit (Lt C-D)



(Lt C1)

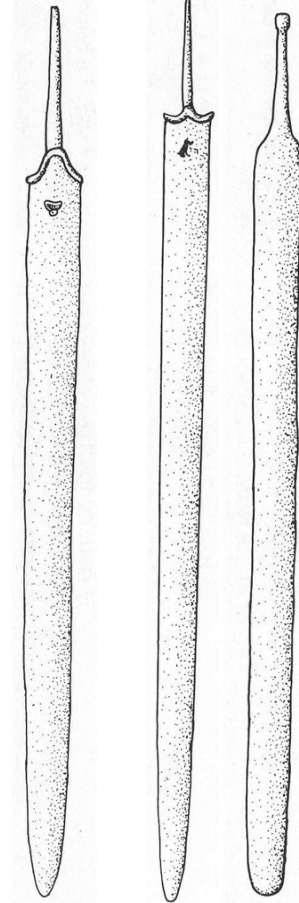


(Lt C2)



(Lt D)

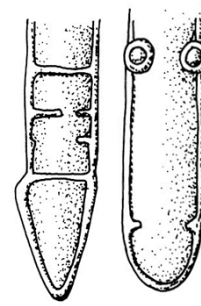
1. Schwertscheiden



(Lt C)

(Lt D)

2. Schwerter



(Lt C)



(Lt D1)



(Lt D2)

3. Ortbänder